

ERIC L. DAVIS ENGINEERING, INC.
 F-3987
 120 East Main Street
 Forney, Texas 75126
 972/564-0592 Fax 972/564-6523
 E-Mail ericdavis@aldengineering.com

SITE PLAN
 ENGINEERED FOR:
VIA BAYOU, INC.

PLAN: SITE
 ELD JOB NO.: 2072
 DRAWN BY: BW
 FIRM REGISTRATION #: 3987

SCALE: 1"=120'

SHEET 01

LEGEND

---	EASEMENT/BUILDING LINE
A	AMENITY CENTER/WORKOUT ROOM
B	BATH HOUSE/LAUNDRY
C	OFFICE/CHECK-IN
D	MANAGERS APARTMENT
E	STORAGE UNITS
F	MAINTENANCE BARN
G	TRASH AREAS
H	DOG PARK

BUILDING	APPROXIMATE AREA (SF)
A	7,500
B	1,200
C	1,830
D	1,000
E	3x11,900+1x4,200 = 39,900 SF
F	600

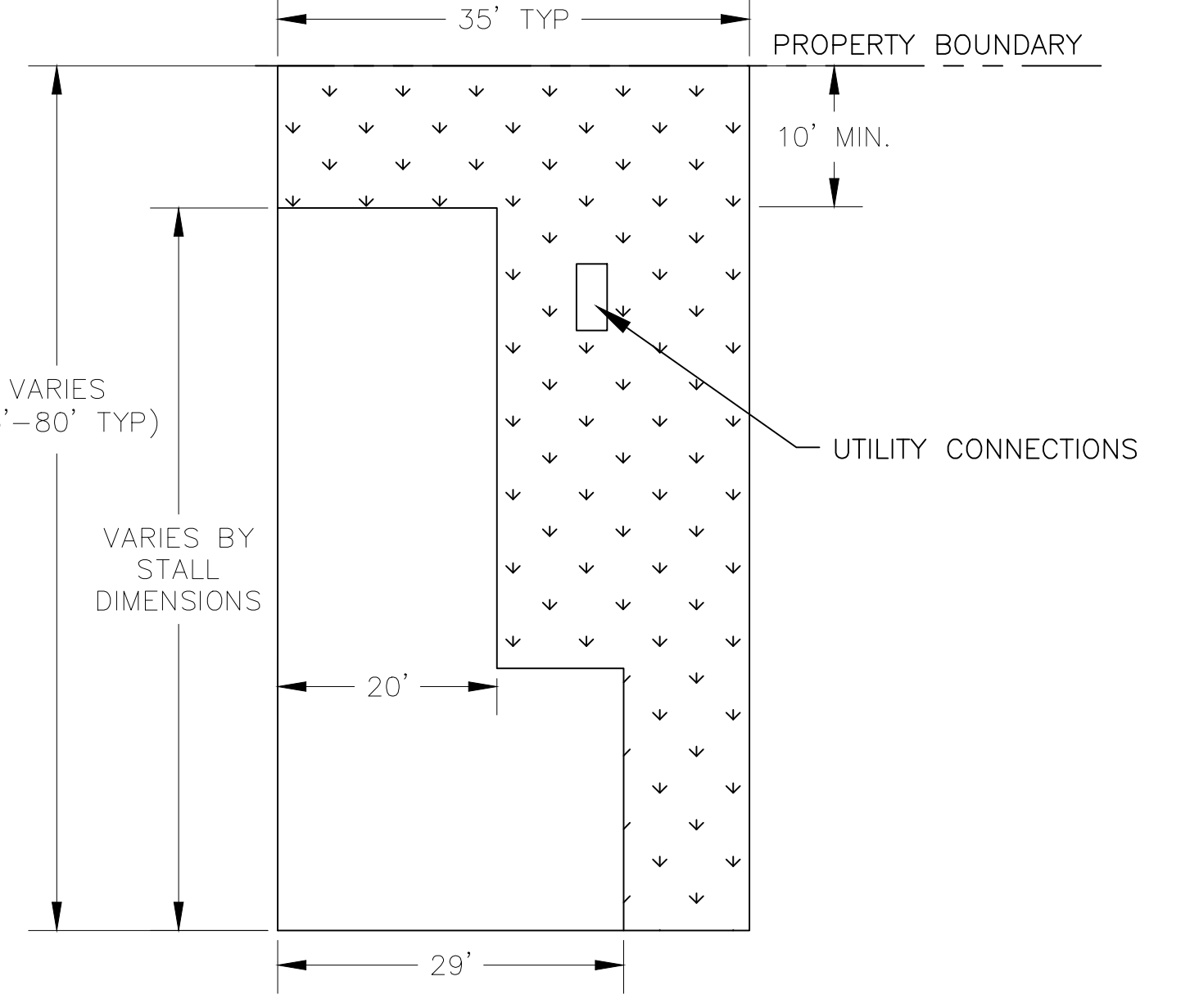
PARKING STALLS (55'X35') = 16
 PARKING STALLS (60'X35') = 112
 PARKING STALLS (70'X35') = 3
 PARKING STALLS (80'X35') = 38

ANGLED PARKING STALLS (68'X35') = 26
 ANGLED PARKING STALLS (70'X35') = 46
 ANGLED PARKING STALLS (106'X35') = 25

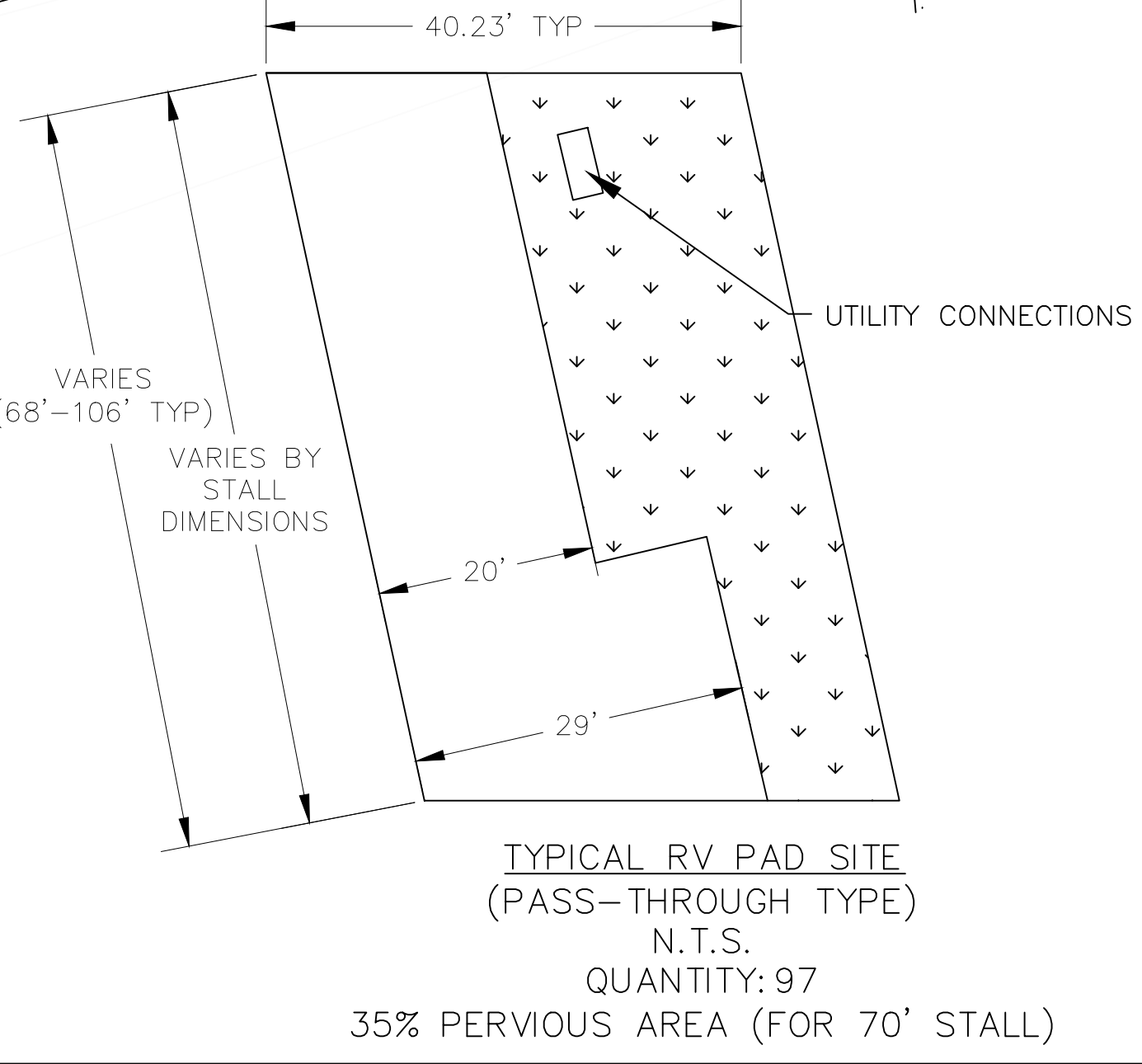
SOUTHERN STORAGE STALLS (50'X14') = 61

TOTAL SPOTS = 264

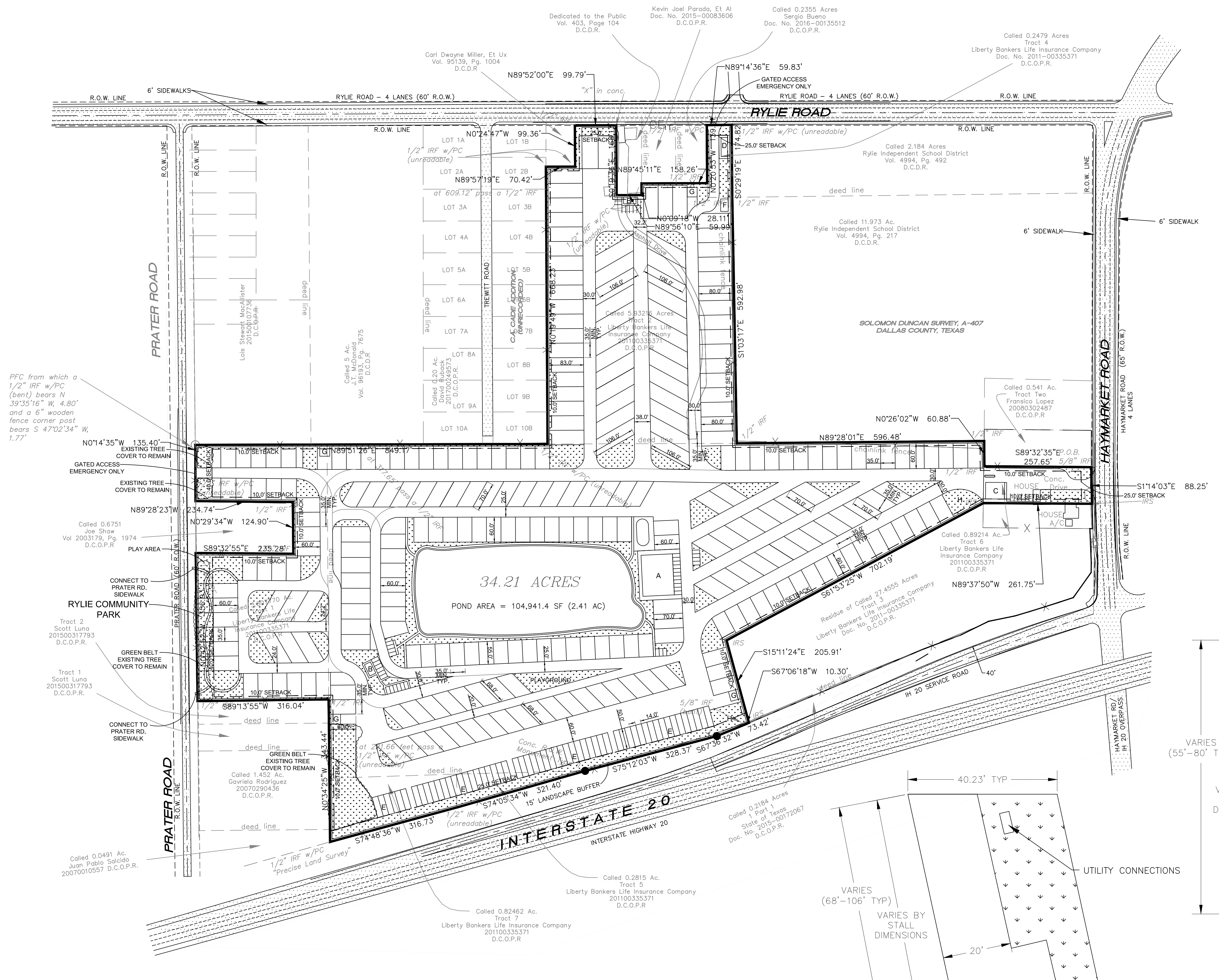
FRONT YARD SETBACK ALONG PRATER: 40'
 FRONT YARD SETBACK: 25'
 SIDE YARD SETBACK: 10'
 REAR YARD SETBACK: 15'



TYPICAL RV PAD SITE
 (PERIMETER TYPE)
 N.T.S.
 QUANTITY: 123
 44% PERVIOUS AREA (FOR 60' STALL)



TYPICAL RV PAD SITE
 (PASS-THROUGH TYPE)
 N.T.S.
 QUANTITY: 97
 35% PERVIOUS AREA (FOR 70' STALL)



AVERAGED TOTAL LANDSCAPE AREA WITHOUT POND: 459,841 SF = 10.6 AC (31% OF TOTAL)
 AVERAGED TOTAL LANDSCAPE AREA WITH POND: 564,782 SF = 13.0 AC (38% OF TOTAL)

